

CAPELLA III

SPUD BARGE



PRINCIPAL PARTICULARS

VESSEL TYPE	SPUD BARGE
SHAPE	BOX
YEAR OF BUILT	2014
PLACE OF BUILT	BAHRAIN
FLAG	PANAMA
CLASS	RINA
GRT	979 TONS
NRT	293 TONS
DEADWEIGHT	2,406 TONS

PRINCIPAL DIMENSIONS

LOA	52.67 MTRS
BREADTH MOULDED	18.29 MTRS
DEPTH MOULDED	3.96 MTRS
DRAFT MOULDED	3.22 MTRS
LIGHT DRAFT	0.70 MTRS

BARGE MOORING SYSTEM

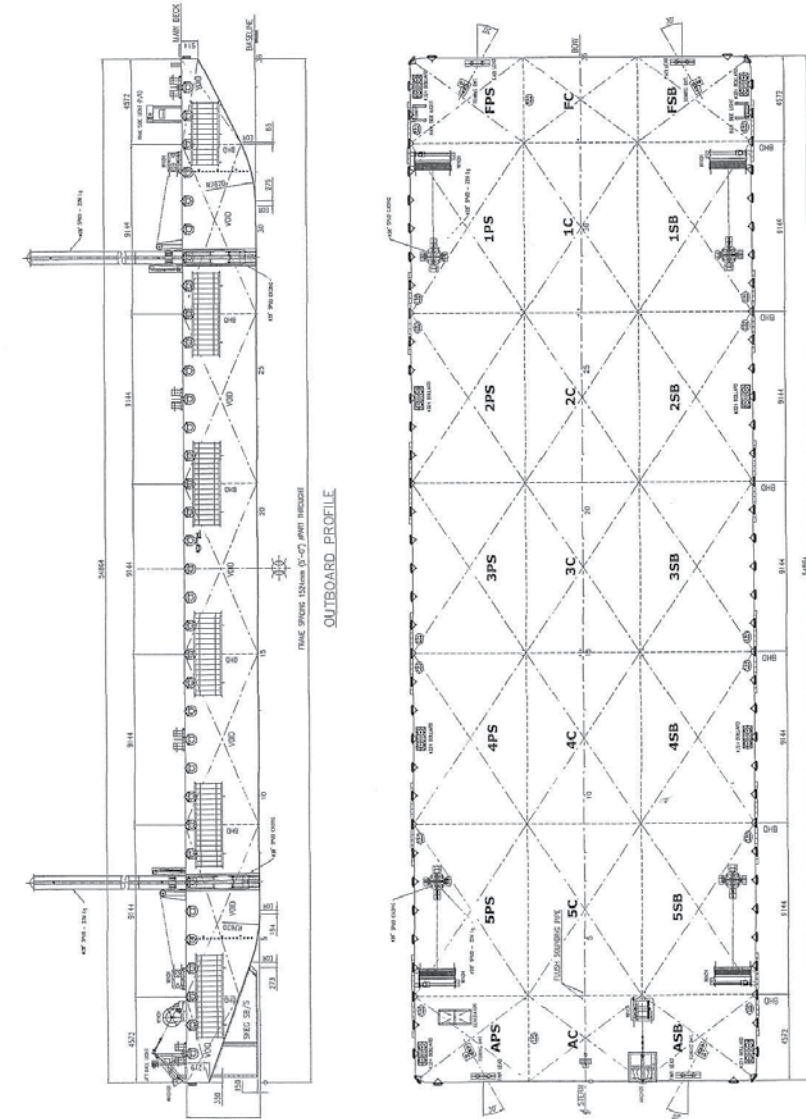
SPUDS	4 NOS
SPUD DIAMETER	83 CMTRS
SPUD LENGTH	22 MTRS
4 POINT MOORING SYSTEM	YES
SPUD WINCHES	4 X 15 TONS
WINCHES SPECIFICATION OF SPUDS	ELECTRO HYDRAULIC, SINGLE DRUM WINCHES
ANCHOR	4 NOS - 2,030 KGS EACH
ANCHOR WINCHES	4 X 10 TONS
ANCHOR WIRE LENGTH	200 MTRS
POWER GENERATOR	2 X PERKINS @ 1500 RPM
POWER GENERATOR CAPACITY	2 X 80 KVA

DECK PARTICULARS

DECK STRENGTH	15 T/M2
DECK AREA	APPROX. 900 M2

OTHER PARTICULARS

FRESH WATER TANK	5 TONS
------------------	--------



MAIN DECK ARRANGEMENT PLAN

NOTES

SCANTLING TABLE	
ITEMS	
NO.	DESCRIPTION
1	MARK DECK
2	BOTTOM
3	DECK SHELL
4	LOVELL BIRD
5	TRANS. BIRD

PRINCIPAL DIMENSIONS
 LENGTH (M.D.) = 54.864 M. (180.0 FT.)
 BREADTH (M.D.) = 18.288 M. (60.0 FT.)
 DEPTH (M.D.) = 3.962 M. (13.0 FT.)
 DECK LOAD : 15 T/M²
 CLASS : ABS - H - AT BARGE

- NOTES:
1. PERMISSIBLE DECK LOADING IS 15 TONNES/50 M. VOL.
 2. ALL COMPARTMENTS ARE VOID.
 3. ALL MANHOLES TO BE BARGE TYPE.
 4. MANHOLES TO CENTRE VIDS TO BE ON LONGITUDINAL BHD.
 5. SOUNDING PIPES TO BE FITTED TO ALL SUCH VIDS.

DESIGNED BY: NASS MARINE SERVICES
 DRAWN BY: NASS MARINE SERVICES
 CHECKED BY: NASS MARINE SERVICES
 APPROVED BY: NASS MARINE SERVICES

PROJECT NO: 1103/100
 SHEET NO: 01 OF 01